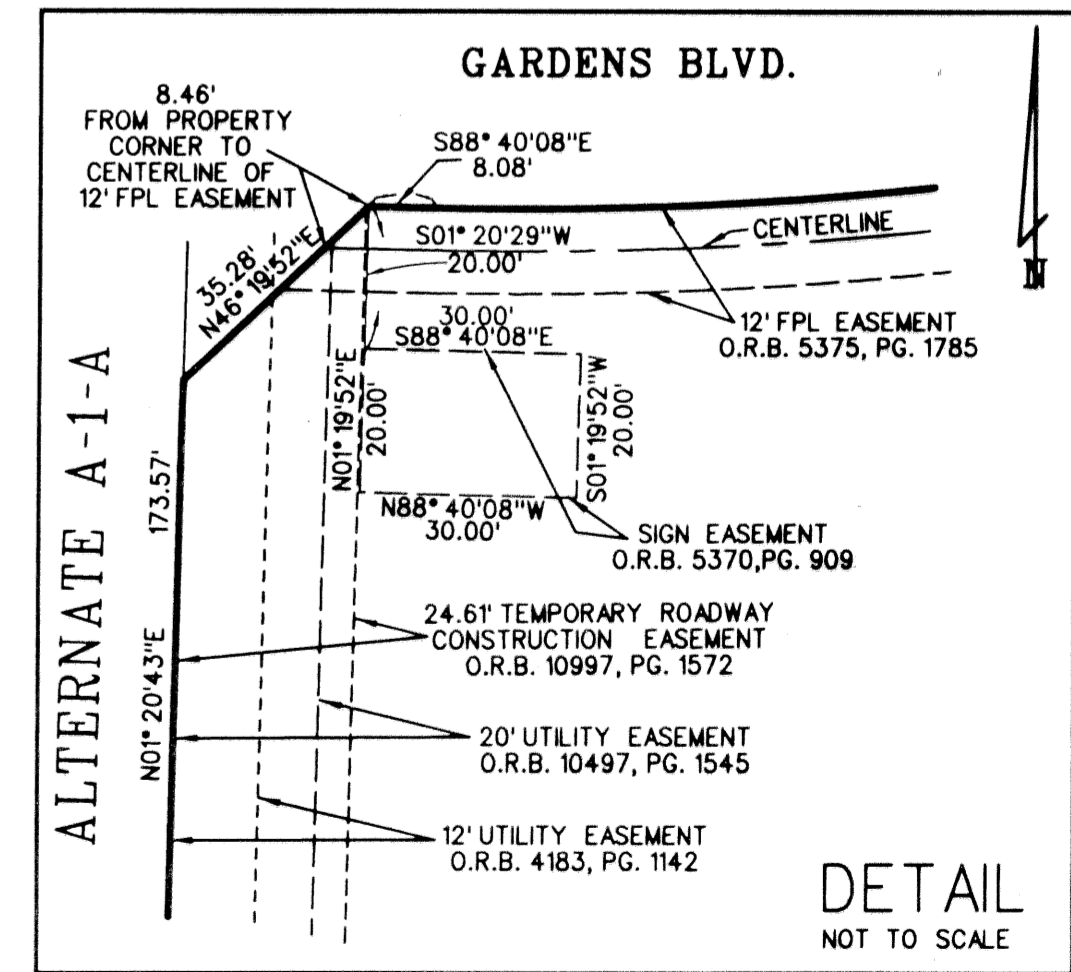
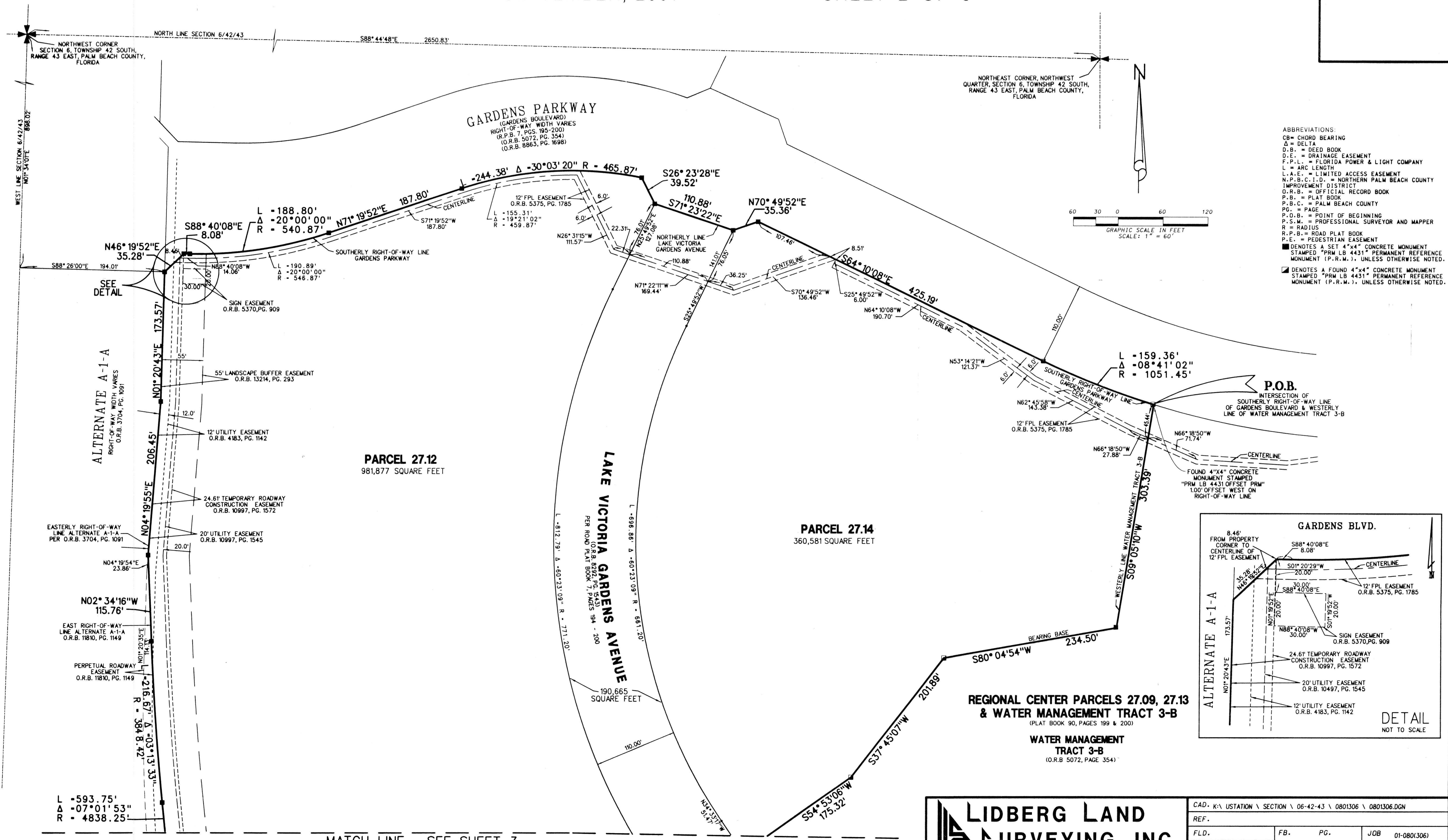


REGIONAL CENTER PARCELS 27.12, 27.14 AND LAKE VICTORIA GARDENS AVENUE

SITUATE IN SECTION 6, TOWNSHIP 42 SOUTH, RANGE 43 EAST,
CITY OF PALM BEACH GARDENS, PALM BEACH COUNTY, FLORIDA
SEPTEMBER, 2001
SHEET 2 OF 3



MATCH LINE - SEE SHEET 3

LIDBERG LAND SURVEYING, INC.
 675 West Indiantown Road, Suite 200,
 Jupiter, Florida 33458 TEL. 561-746-8454

CAD. K:\USTATION \ SECTION \ 06-42-43 \ 0801306 \ 0801306.DGN			
REF.			
FLD.	FB.	PG.	JOB 01-080(306)
OFF. L.J.C.			DATE 07/03/01
CKD. D.C.L.	SHEET 2	OF 3	DWG. 001-080P